

PRODUCT SHEET

SUPER DRY™ Container Desiccant DP 1000g



Typical Properties

SUPER DRY™ container desiccant DRY POLE™ 1000g (DP 1000g) combines calcium chloride and natural organic gelator inside of a leakproof pouch. These desiccants absorb moisture turning it into a gel, capturing and isolating the moisture away from cargo and merchandise and eliminating any possibility of leakage. At 95% RH and 35 °C over a period of 45 days, the moisture absorption rate of DP 1000g is more than 300% of the desiccant bags net weight.

DP 1000g utilizes a linked inner pouch system filled with desiccant powder, encased in a rigid printed cardstock shell featuring precision airflow perforations for maximum hygroscopic efficiency. The reverse side's trapezoidal shape ensures secure mounting within container wall recesses.

Shelf Life

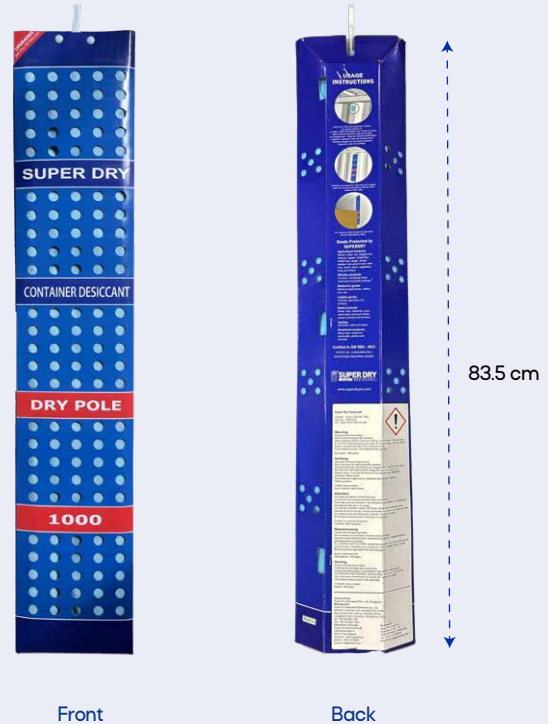
36 months from date of production if stored in a dry warehouse with normal humidity and if packaging remains un-opened. If packaging is opened, use the desiccants as soon as possible, and re-seal the packaging bag immediately after use.

Brand Name	SUPER DRY™
Product	DP 1000g
Type	Calcium Chloride Desiccant
Main Ingredient	Calcium Chloride, Natural organic gelator
Package Material	Inner: Breathable & Waterproof material, Non-woven fabric Outer: Cardboard box
Absorption Capability	≥ 300% (35 °C , 95% RH)
Usage	Suitable for use in dry cargo containers transporting various goods.
Utility	It can remove the moisture in the container to prevent mold, mold odor, rust container rain, cargo sweat and other damage caused by moisture.
Compliance	REACH certified, RoHS, DMF Free

PRODUCT SHEET

SUPER DRY™ Container Desiccant DP 1000g

Product model	DP 1000g	
Net weight (g)	1000	
Gross weight (g)	1263	
Size W x H (cm)	15.3 x 83.5	
Packing Specification		
Pcs / bag	1	
Pcs / carton	14	
Net weight / carton (kgs)	14	
Gross weight / carton (kgs)	19	
Cartons size (cm)	86 x 28 x 26	
Cartons / pallet	28	
Cartons/ 20' GP	(with pallet)	336
	(without pallet)	447
Cartons/ 40' HQ	(with pallet)	672
	(without pallet)	900



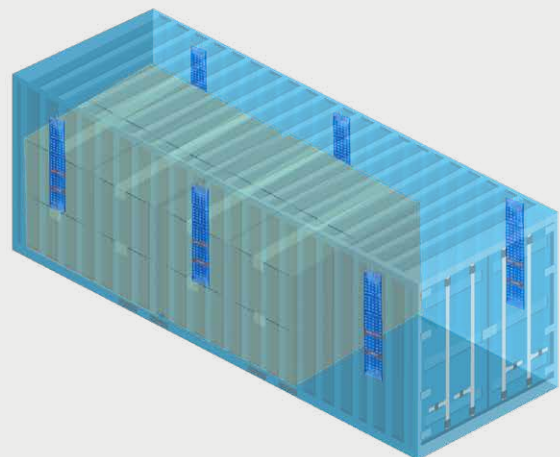
Usage

Once SUPER DRY™ desiccant is removed from PE bag, it will immediately begin absorbing moisture. To provide optimal protection for your product, please promptly place the desiccant into the container, loading as soon as possible and seal container after loading. For detailed usage instructions and precautions, please consult our staff.

Disposal

After use, SUPER DRY™ desiccant turns into a gel-like substance. This material is non-toxic and environmentally harmless, so it can be disposed of as regular waste or handled in accordance with local laws and regulations.

DP 1000g in container



* The image is for illustrative purposes only. For precise desiccant usage, consult our staff.

20' GP: 4 - 6 pcs
40' GP: 8 - 10 pcs
40' HQ: 10 - 12 pcs