

PRODUCT SHEET

SUPER DRY™ Container Desiccant DS 1500g(BK-SS)



Typical Properties

SUPER DRY™ container desiccant DS 1500g(BK-SS) combines calcium chloride and natural organic gelator inside of a leakproof pouch. These desiccants absorb moisture turning it into a gel, capturing and isolating the moisture away from cargo and merchandise and eliminating any possibility of leakage. At 95% RH and 35 °C over a period of 45 days, the moisture absorption rate of DS 1500g(BK-SS) is more than 300% of the desiccant bags net weight.

DS 1500g(BK-SS) is a blanket-style container desiccant. With its integrated strong adhesive backing, it can be securely laid flat on top of cargo to effectively protect your goods from container rain and moisture damage.

Shelf Life

24 months from date of production if stored in a dry warehouse with normal humidity and if packaging remains un-opened. If packaging is opened, use the desiccants as soon as possible, and re-seal the packaging bag immediately after use.

Brand Name	SUPER DRY™
Product	DS 1500g(BK-SS)
Type	Calcium Chloride Desiccant
Main Ingredient	Calcium Chloride, Natural organic gelator
Package Material	Inner: Breathable & Waterproof material Outer: Non-woven fabric
Absorption Capability	≥ 300% (35 °C , 95% RH)
Usage	Suitable for use in dry cargo containers transporting various goods.
Utility	It can remove the moisture in the container to prevent mold, mold odor, rust container rain, cargo sweat and other damage caused by moisture.
Compliance	REACH certified, RoHS, DMF Free

PRODUCT SHEET

SUPER DRY™ Container Desiccant DS 1500g(BK-SS)

Product model	DS 1500g(BK-SS)
Net weight (g)	1500
Gross weight (g)	1642.5
Size W x H (cm)	48.0 x 65.0
Packing Specification	
Pcs / bag	1
Pcs / carton	8
Net weight / carton (kgs)	12
Gross weight / carton (kgs)	13.92
Cartons size (cm)	46 x 28 x 26
Cartons / pallet	56
Cartons/ 20' GP	(with pallet) 672
	(without pallet) 894
Cartons/ 40' HQ	(with pallet) 1344
	(without pallet) 1800

Front



Back



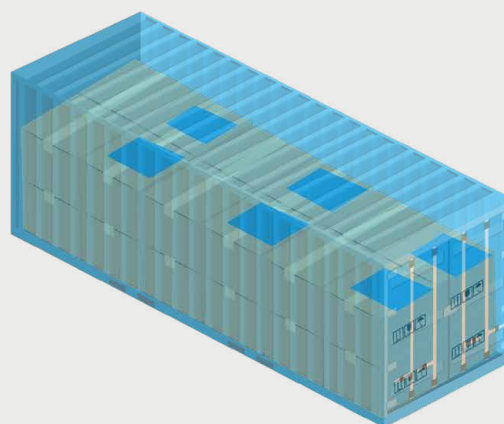
Usage

Once SUPER DRY™ desiccant is removed from PE bag, it will immediately begin absorbing moisture. To provide optimal protection for your product, please promptly place the desiccant into the container, loading as soon as possible and seal container after loading. For detailed usage instructions and precautions, please consult our staff.

Disposal

After use, SUPER DRY™ desiccant turns into a gel-like substance. This material is non-toxic and environmentally harmless, so it can be disposed of as regular waste or handled in accordance with local laws and regulations.

DS 1500g(BK-SS) in container



* The image is for illustrative purposes only. For precise desiccant usage, consult our staff.

20' GP: 3 - 4 pcs
40' GP: 6 - 7 pcs
40' HQ: 7 - 8 pcs